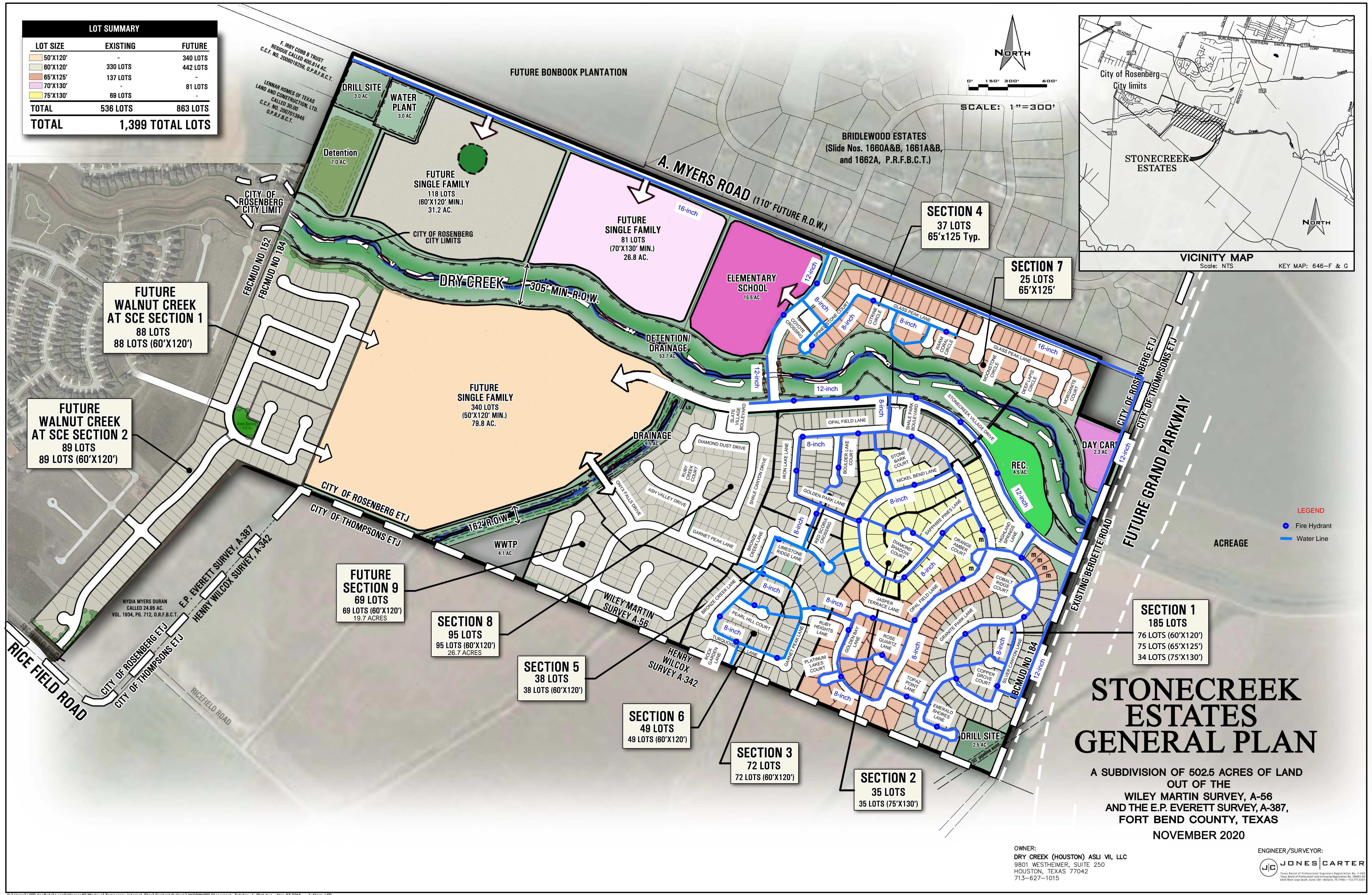
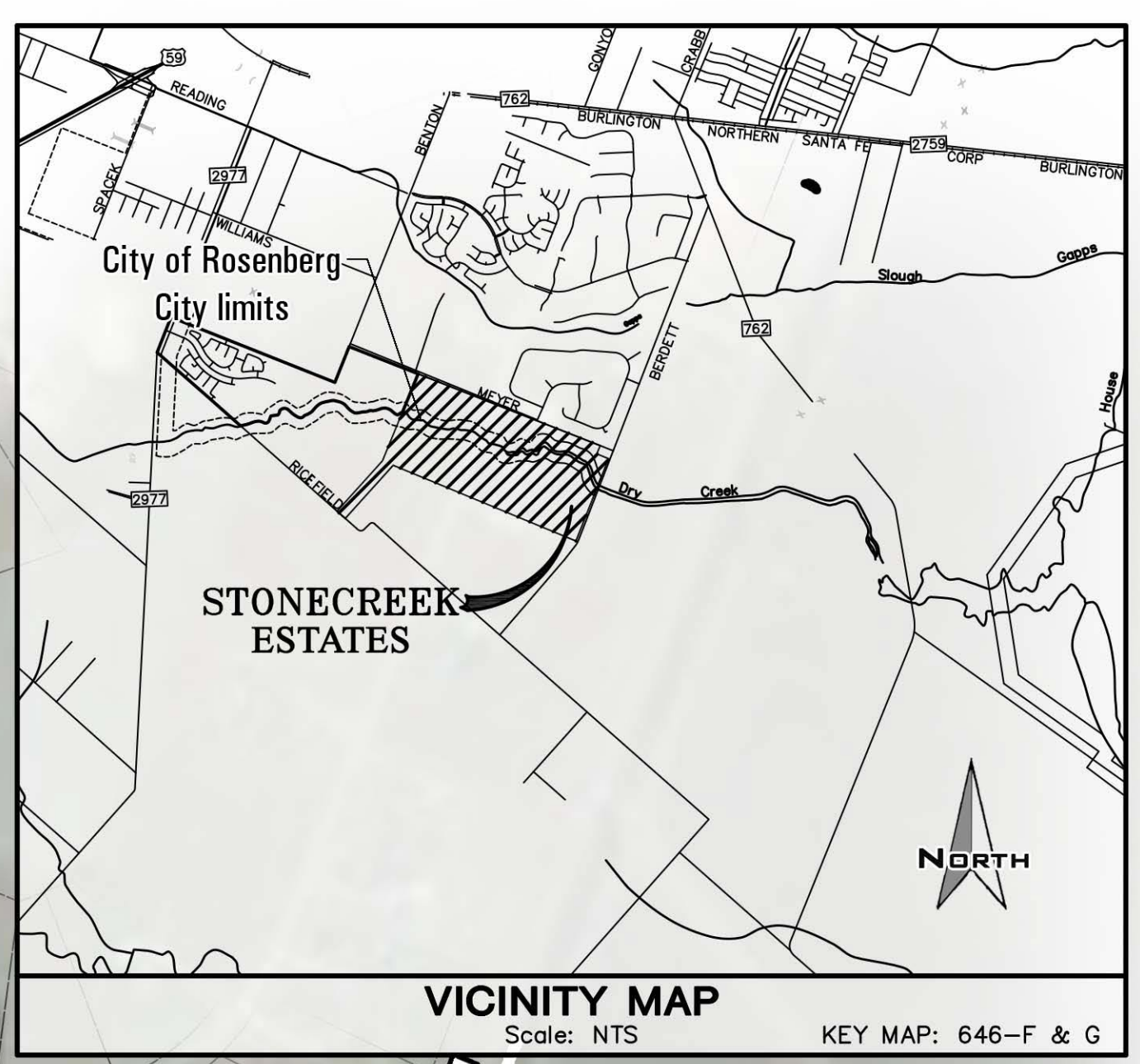
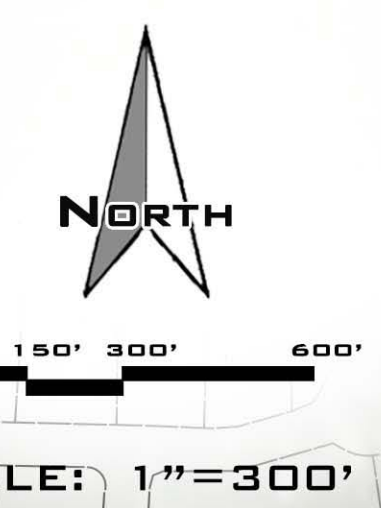


LOT SUMMARY		
LOT SIZE	EXISTING	FUTURE
50'x120'	-	340 LOTS
60'x120'	330 LOTS	442 LOTS
65'x125'	137 LOTS	-
70'x130'	-	81 LOTS
75'x130'	69 LOTS	-
TOTAL	536 LOTS	863 LOTS
TOTAL	1,399 TOTAL LOTS	



FUTURE WALNUT CREEK AT SCE SECTION 1
88 LOTS
88 LOTS (60'x120')

FUTURE WALNUT CREEK AT SCE SECTION 2
89 LOTS
89 LOTS (60'x120')

FUTURE SECTION 9
69 LOTS
69 LOTS (60'x120')
19.7 ACRES

SECTION 8
95 LOTS
95 LOTS (60'x120')
26.7 ACRES

SECTION 5
38 LOTS
38 LOTS (60'x120')

SECTION 6
49 LOTS
49 LOTS (60'x120')

SECTION 3
72 LOTS
72 LOTS (60'x120')

SECTION 2
35 LOTS
35 LOTS (75'x130')

SECTION 4
37 LOTS
65'x125' Typ.

SECTION 7
25 LOTS
65'x125'

SECTION 1
185 LOTS
76 LOTS (60'x120')
75 LOTS (65'x125')
34 LOTS (75'x130')

STONECREEK ESTATES GENERAL PLAN

A SUBDIVISION OF 502.5 ACRES OF LAND
OUT OF THE
WILEY MARTIN SURVEY, A-56
AND THE E.P. EVERETT SURVEY, A-387,
FORT BEND COUNTY, TEXAS
NOVEMBER 2020

OWNER:
DRY CREEK (HOUSTON) ASLJ VII, LLC
9801 WESTHEIMER, SUITE 250
HOUSTON, TEXAS 77042
713-627-1015

ENGINEER/SURVEYOR:
 JONES CARTER
Texas Board of Professional Engineers Registration No. 1-433
Texas Board of Professional Land Surveying Registration No. 28843-02
6300 West Loop South, Suite 200 - Houston, TX 77042-7133