



Welcome to a new FRONTIER !

RIVER RANCH MUD 3'S PARTNERSHIP WITH FRONTIER WASTE SOLUTIONS FOR SOLID WASTE SERVICES WILL BEGIN APRIL 1 , 2023.

PLEASE CALL FRONTIER WASTE TO REQUEST YOUR CARTS AT 936-258-9035

TRASH SERVICE DETAILS

- \* Frontier Waste will be providing curbside trash service TWICE PER WEEK utilizing 96 Gallon carts that Frontier Waste Solutions will provide.
\* Please have trash carts set out at the curb by 7:00 a.m. on your service days
\* Frontier will collect ONLY trash that is in carts with the exception being on bulk collection days.
\* You can request additional carts for an additional \$15.00 per cart per month.
\* We do not service any type of barrel or drum.
\* Please bag all trash in your containers to help eliminate wind-blown debris in your community

\*\*\*SHARPS: Please put needles used for insulin injections into a thick, hard plastic container to protect solid waste employees (ex: laundry detergent container or sharps container)

TRASH COLLECTION SERVICE DAYS – MONDAY AND THURSDAY

RECYCLE COLLECTION SERVICE DAY- WEDNESDAY

HOLIDAY SCHEDULE-

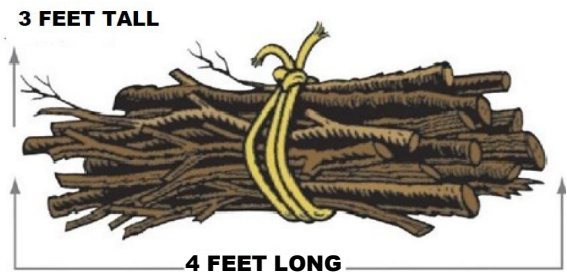
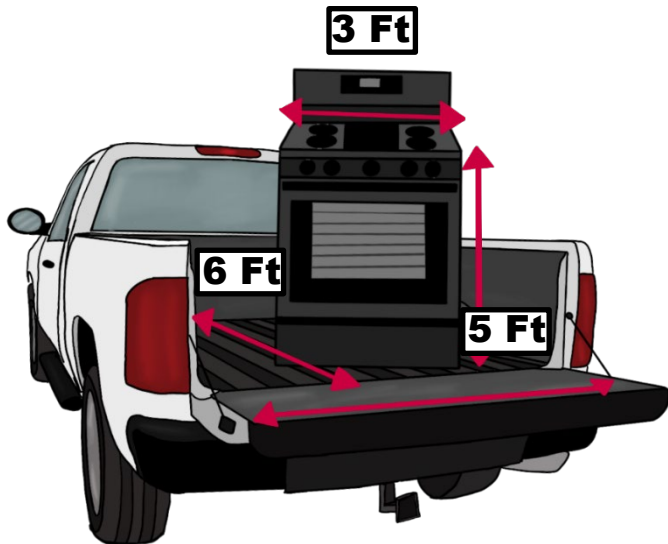
Thanksgiving Day, Christmas Day

If your service day falls on a holiday, service will be provided on the next scheduled collection day. Monday holiday would be serviced on the following Thursday, Thursday holiday would be serviced on the following Monday.

## **Bulky items will be collected ONCE per week on THURSDAY.**

### **BULKY WASTE / BUNDLED ITEM COLLECTION GUIDELINES:**

- \* Weight of Bulky Items: Individual Bulky items must be light enough to be loaded into refuse vehicle by two workers.
- \* Residents are allowed to set out for collection - **2 yards** of BULKY WASTE per week (refer to diagram of 1 and 2 cubic yards below)
- \* Residents can set out acceptable BULKY items that are no larger than 3 feet by 3 feet by 4 feet
- \* Please place smaller items in a container or box suitable for lifting items into refuse vehicle
- \* Please bundle items such as newspapers, old rugs or small sections of carpet, small limbs
- \* Please tie and bundle brush into 4-foot-long bundles. This is to be included in your 2-yard limit.



**Maximum Width: 4 Feet**  
**Maximum Weight: 30 Lbs**  
**Maximum Diameter of Branch:**

### **ACCEPTABLE BULKY ITEMS INCLUDE:**

- \* Furniture such as tables, sofas, chairs, lawn furniture
- \* Appliances such as washing machines, dryers, stoves, water heaters, etc..
- \* Misc. items including TV's, large toys, basketball goals, sports equipment, bikes, kid's toys must be labeled "bulky item" so they are not mistakenly put into trash truck.
- \* Refrigerators/Freezers/AC Units: Items MUST be tagged with proof of freon removal by certified technician in order to collect

### **BULKY ITEMS NOT ACCEPTED INCLUDE:**

- \* No construction materials from remodeling projects—must call Frontier to get a quote on roll off container or special pickup
- \* No dirt, bricks, rock, concrete, sand, or shingles
- \* No stumps or tree limbs larger than 4 inches in diameter – must be split into 4 inch diameter.
- \* Heavy bulk - furniture, mattresses, any bags over 50lbs
- \* No batteries, tires, pressurized tanks (ex: propane, helium, oxygen, acetylene)
- \* No oils of any kind, gas/diesel/fuel, paint, chemicals, solvents, other hazardous materials, etc..